

IEC AC CHARGING SOCKET

IEC交流充电插座

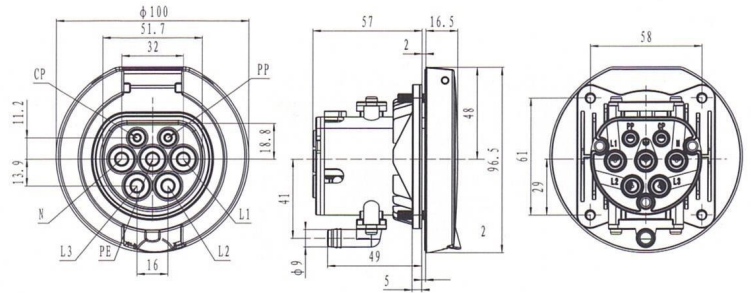
型号 Model:

产品应用: 充电桩端电连接输入

Product application: Charging pile electrical connection

● V2-DSIEC2a-G-EV16S

● V2-DSIEC2a-G-EV32S



快速代码 Speed code: 2040

产品特点 Features

- 符合 62196-2 IEC 2010 SHEET 2-IIa 标准
Meet 62196-2 IEC 2010 SHEET 2-IIa standard
- 外形美观, 上翻盖防护, 支持前安装方式
Nice appearance, up flip protection, support front installation

机械性能 Mechanical properties

- 机械寿命: 空载拔插 >10000 次
Mechanical life: no-load plug in/pull out >10000 times
- 耦合时插拔力: >45N < 80N
Coupled insertion force: >45N < 80N

环境性能 Environmental performance

- 工作环境温度: -30°C ~ +50°C
Operating temperature: -30°C ~ +50°C

材料应用 Applied Materials

- 外壳材料: 热塑性塑料, 阻燃等级 UL94 V-0
Case Material: Thermoplastic, flame retardant grade UL94 V-0
- 插套: 铜合金, 表面镀银
Contact bush: Copper alloy, silver plating

- 可靠性材料, 阻燃、耐压、耐磨、耐冲击、高抗油
Reliability of materials, antflaming, pressure-resistant, abrasion resistance, impact resistance and high oil
- 优越防护性能, 防护等级达到 IP44 (工作状态)
Excellent protection performance, protection grade IP44 (working condition)

电气性能 Electrical Performance

- 额定工作电流: 16A 或 32A
Rated current: 16A or 32A
- 工作电压: 250/415V
Operation voltage: 250/415V
- 绝缘电阻: >1000MΩ (DC1000V)
Insulation resistance: >1000MΩ (DC1000V)
- 端子温升: <50K
Terminal temperature rise: <50K
- 耐压: 2000V
Withstand Voltage: 2000V
- 接触阻抗: 0.5mΩ Max
Contact Resistance: 0.5mΩ Max

产品选型与标准配线 Model selection and the standard wiring

型号 /Model	额定电流 /Rated current	线缆规格 /Cable specification
V2-DSIEC2a-G-EV16S	16A 单相 /Single phase	3 X 2.5mm ² + 2 X 0.75mm ²
	16A 三相 /Three phase	5 X 2.5mm ² + 2 X 0.75mm ²
V2-DSIEC2a-G-EV32S	32A 单相 /Single phase	3 X 6mm ² + 2 X 0.75mm ²
	32A 三相 /Three phase	5 X 6mm ² + 2 X 0.75mm ²